

2803/205

CLOTHING CONSTRUCTION II

PRACTICAL

June/July 2017

Time: 6 hours



THE KENYA NATIONAL EXAMINATIONS COUNCIL

DIPLOMA IN FASHION DESIGN AND CLOTHING TECHNOLOGY

MODULE II

CLOTHING CONSTRUCTION II PRACTICAL

6 hours

INSTRUCTIONS TO CANDIDATES

1. You should have the following for this examination:
 - (i) plain light weight fabric $1\frac{1}{2}$ metres by 114 cm wide;
 - (ii) adhesive interfacing 50 cm by 58 cm;
 - (iii) zip 18 cm (7 ") long;
 - (iv) sewing thread to match the fabric;
 - (v) one button 1.5 cm diameter without a shank;
 - (vi) brown papers;
 - (vii) sewing tools;
 - (viii) one large envelope.
2. Study the sketches carefully before beginning the test.
3. At the end of the examination:
 - (a) stitch on a label bearing your name and index number on a single layer of fabric without concealing any details;
 - (b) enclose the garment in the large envelope provided.

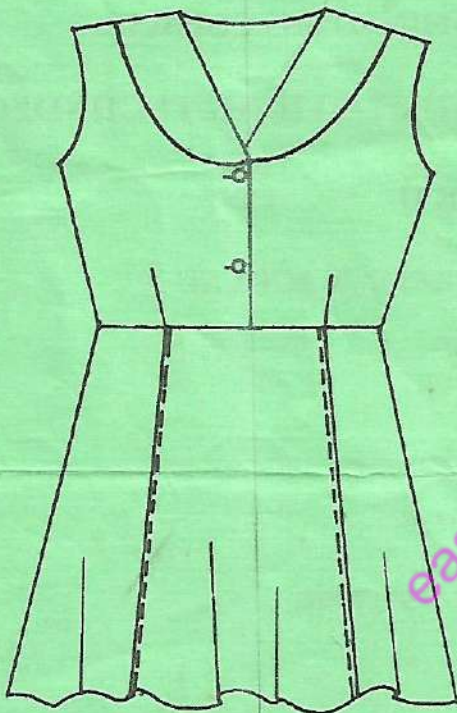
This paper consists of 2 printed pages.

Candidates should check the question paper to ascertain that both pages are printed as indicated and that no questions are missing.

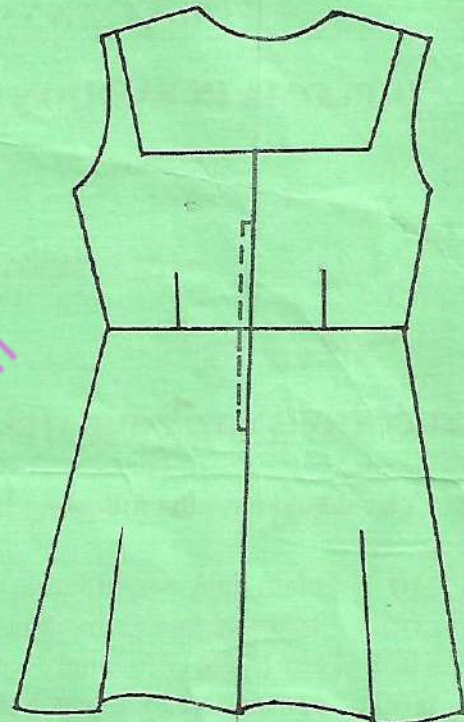
TASKS

Using the measurements and the materials provided, cut out and make the dress style sketched below as follows:

- (a) use the plain open seam at the sides and shoulders;
- (b) attach the collar with a crossway strip;
- (c) understitch the armhole facings;
- (d) use the extended facing at the front;
- (e) hand hem the garment;
- (f) make **one** hand worked buttonhole at the top of the opening and sew on the button.



FRONT VIEW



BACK VIEW

Measurements

Bust	-	121
Waist	-	17.5 + 3
Across back	-	35.5
Neck size	-	11.5 + 6.5
Shoulder	-	35.5
Scyce depth	-	35 cm
Back neck to waist	-	35 cm ✓
Full length	-	74 cm ✓

THIS IS THE LAST PRINTED PAGE.